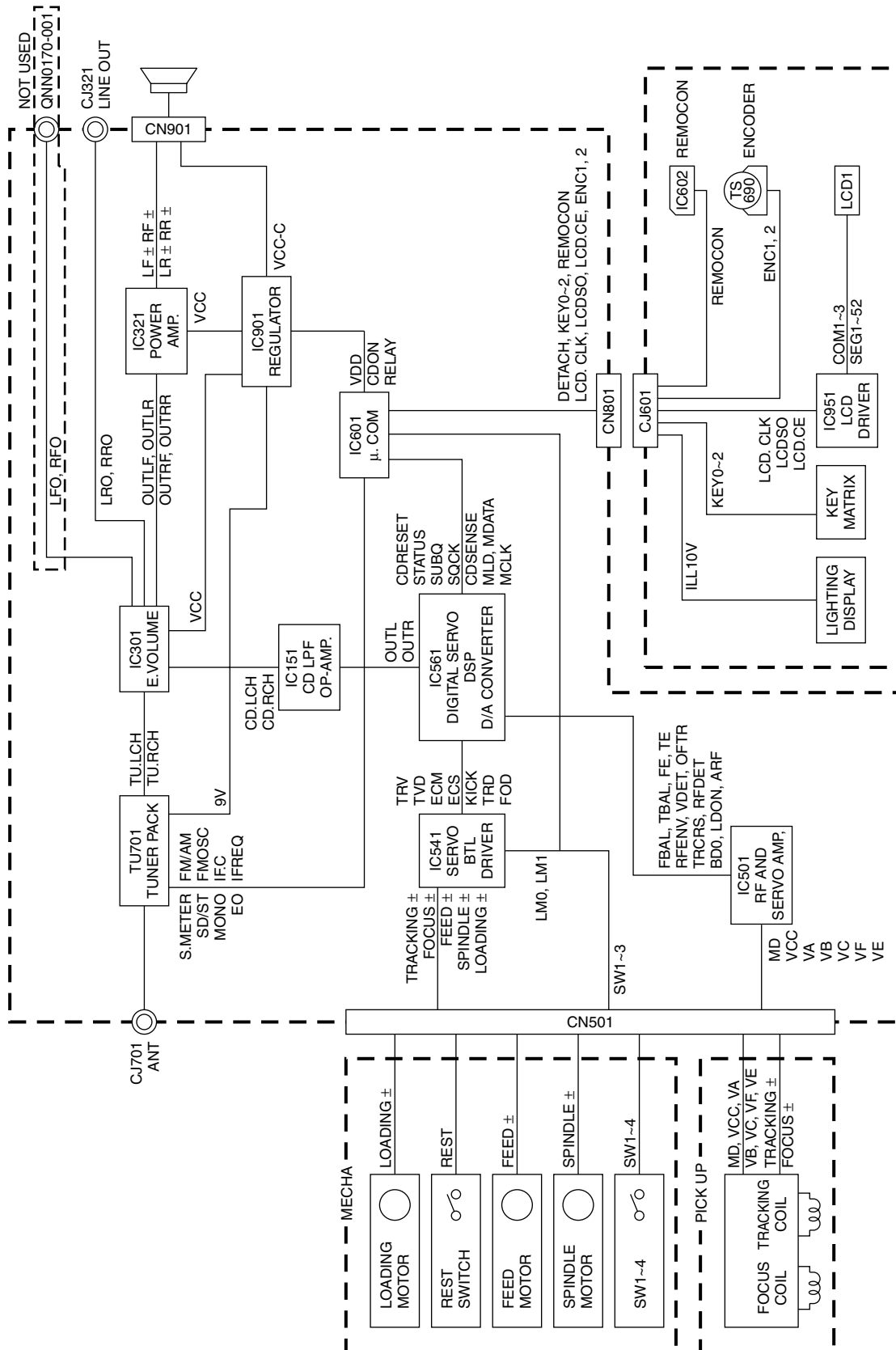
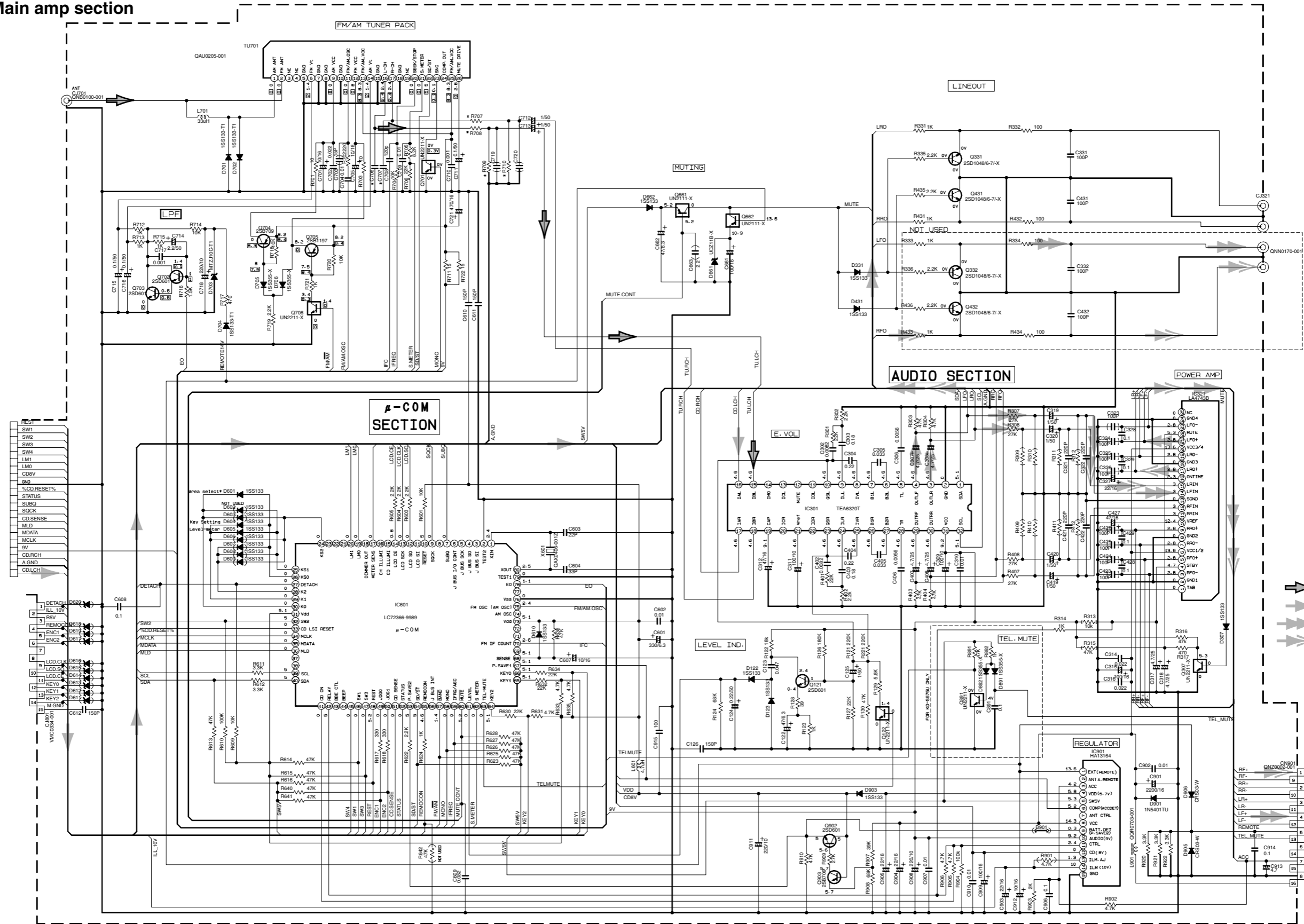


Block diagram



Standard schematic diagrams

Main amp section

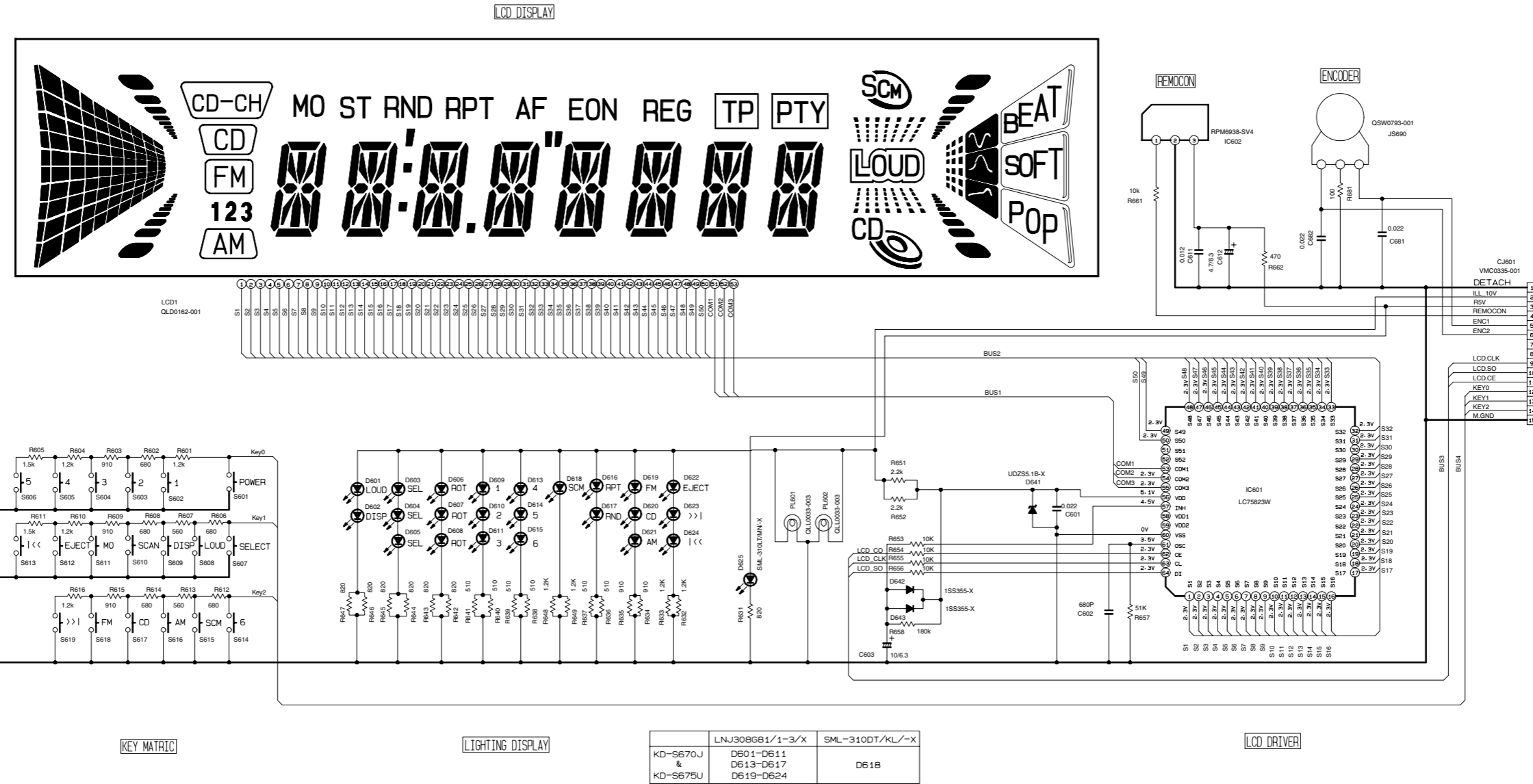


REMARKS	C706, C707	R707, R708	R709, R710	D601
J VERSION	0.33	2.7K	5.1K	NOT USED
V SERIES	0.022	2K	5.6K	USED

NOTES:
 1. VOLTAGES ARE DC-MEASURED WITH A DIGITAL VOLT METER WITHOUT INPUT SIGNAL.
 CONDITION --- FM () AM MODE

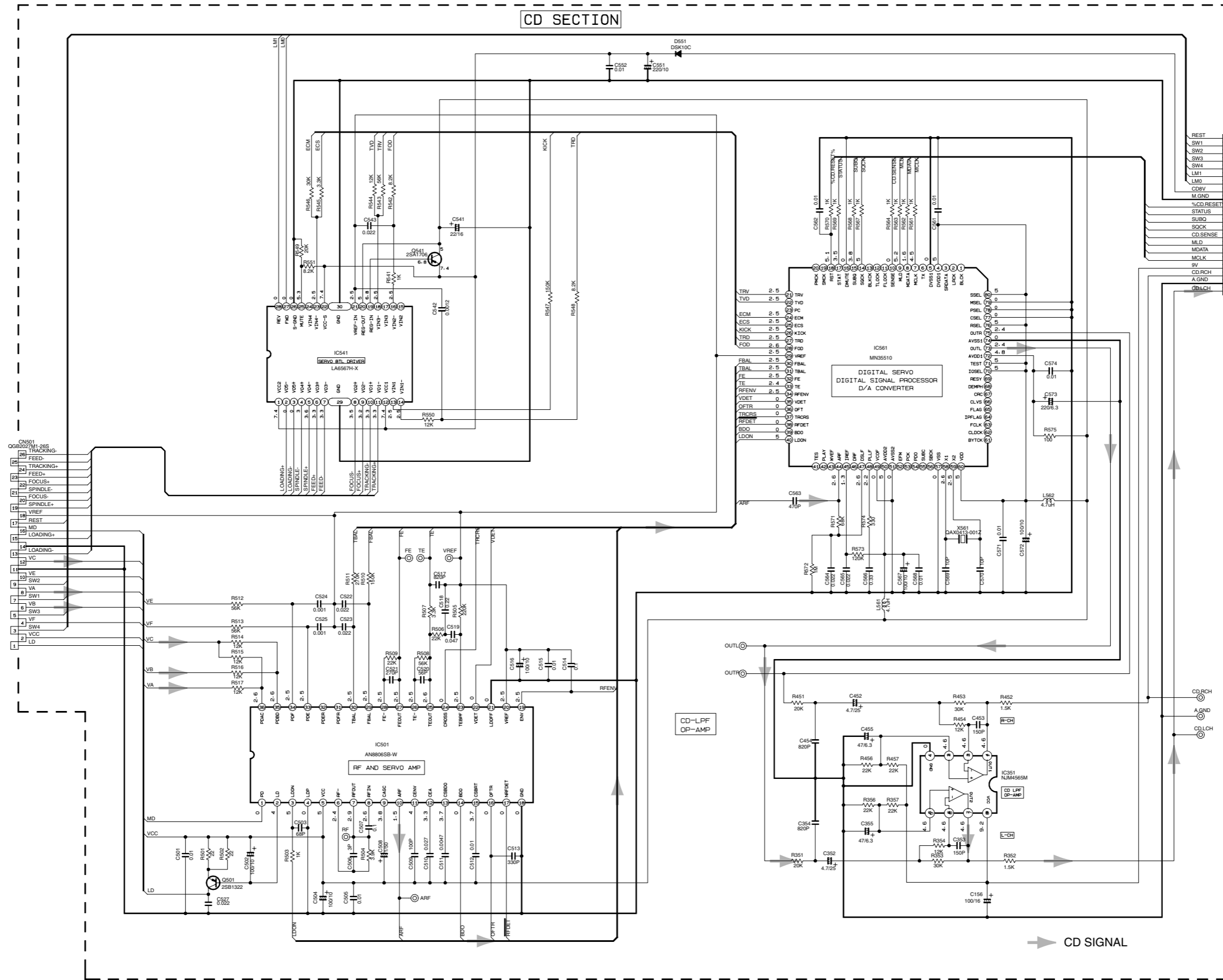
■ LCD & Key control section

7
6
5
4
3
2
1



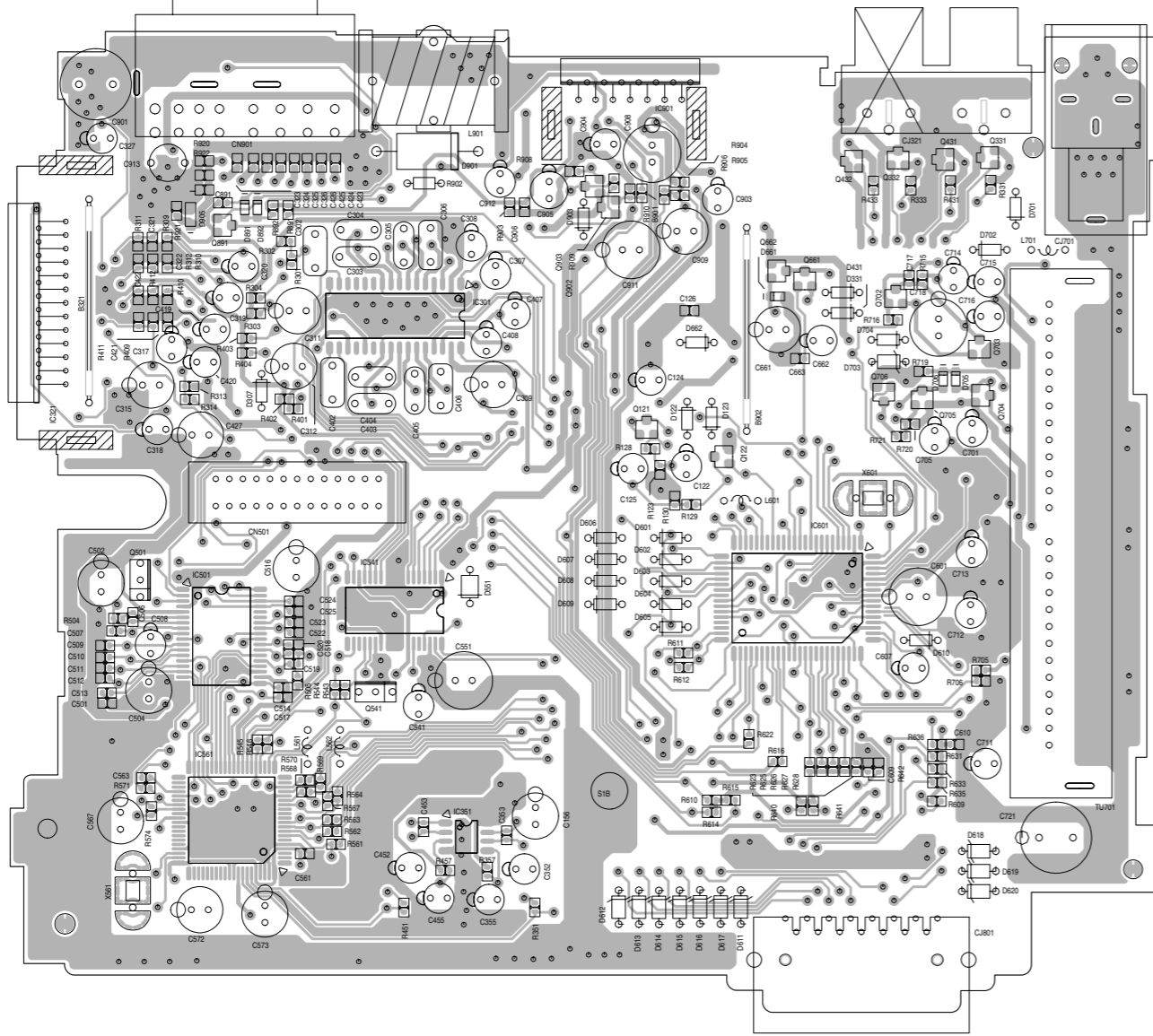
A B C D E F G H I J

CD servo control section

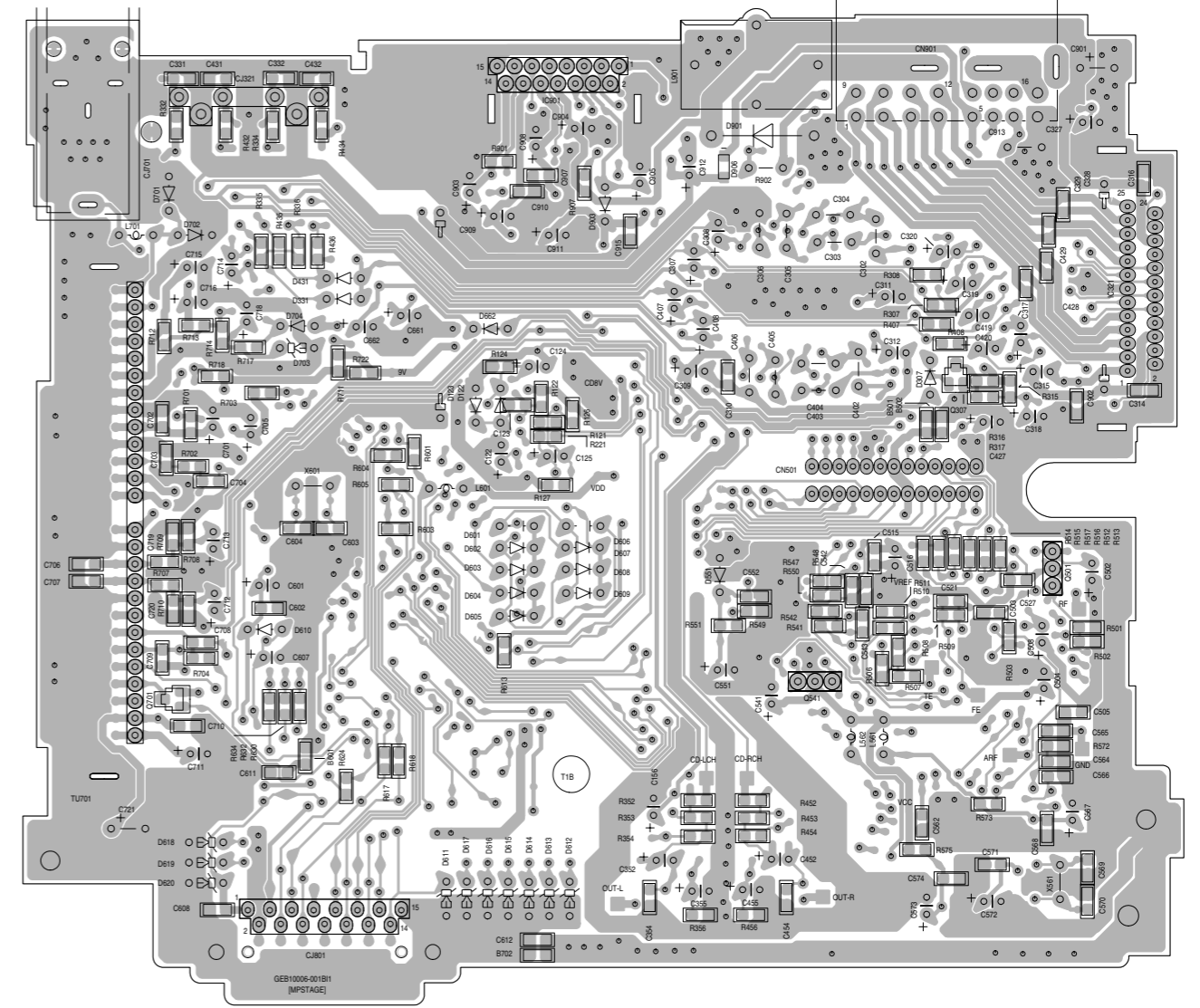


Printed circuit boards

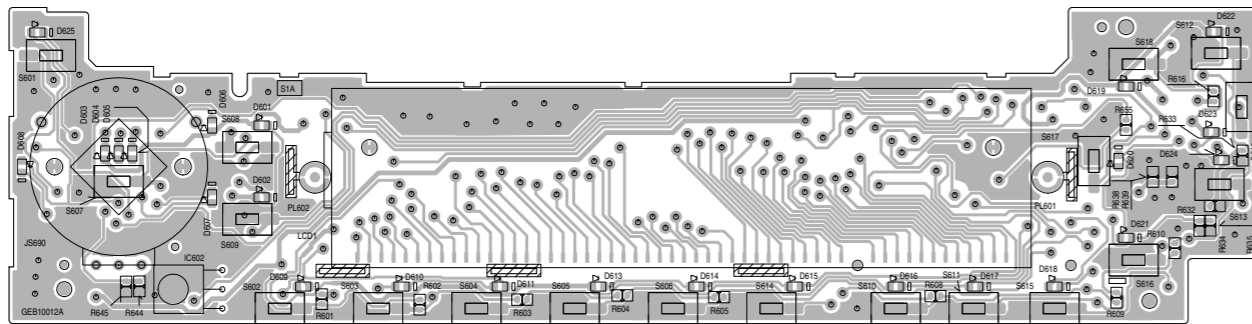
■ Main board (Forward side)



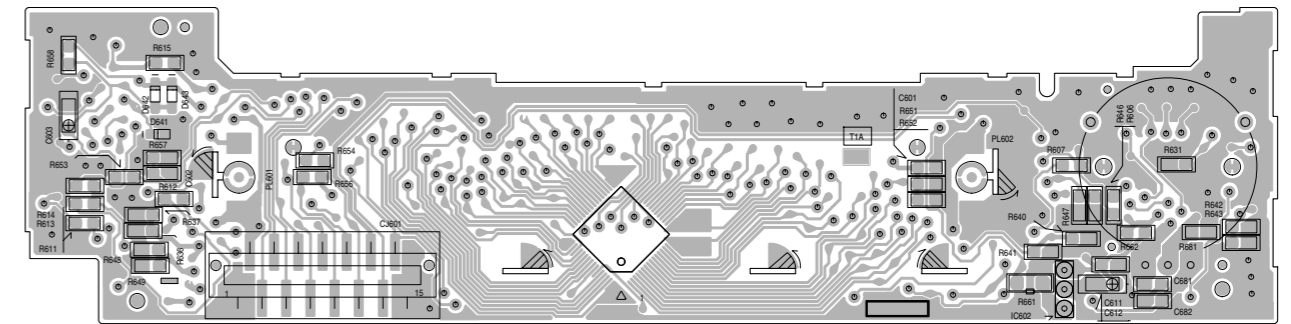
■ Main board (Reverse side)



■ Front board (Forward side)



■ Front board (Reverse side)



< MEMO >